

## Logi XL

The LOGI XL is an adjustable plastic strap seal designed for use on a wide variety of applications where fast, easy and secure sealing is required.

It is a three-piece seal made up of high quality polypropylene plastic with an integral metal clip which provides a high level of security. During applications the tapering tail fits into small sealing apertures and allows smooth tail insertion for easy pull up.

### Marking/Printing :

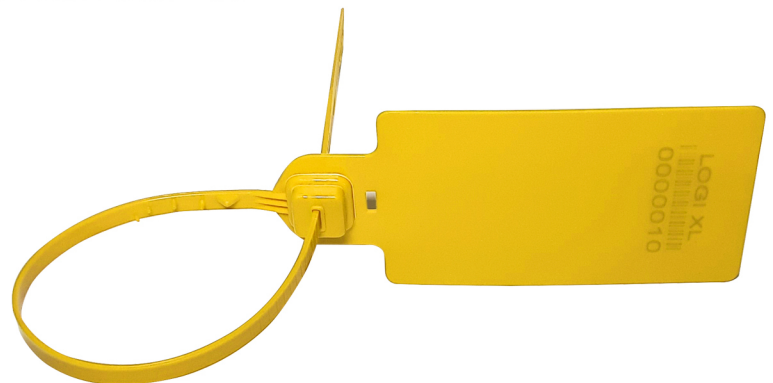
Standard marking: Company name/Logo, Barcode & consecutive numbers (7 digits) laser engraved.

### Colours :







Standard: White (advised for barcode printing)  
Popular Colors Available: Orange, Green, Blue, Yellow

### Technical Data :

Housing Raw Material – PPCP CAP – PPHP  
Metal Lock – SS

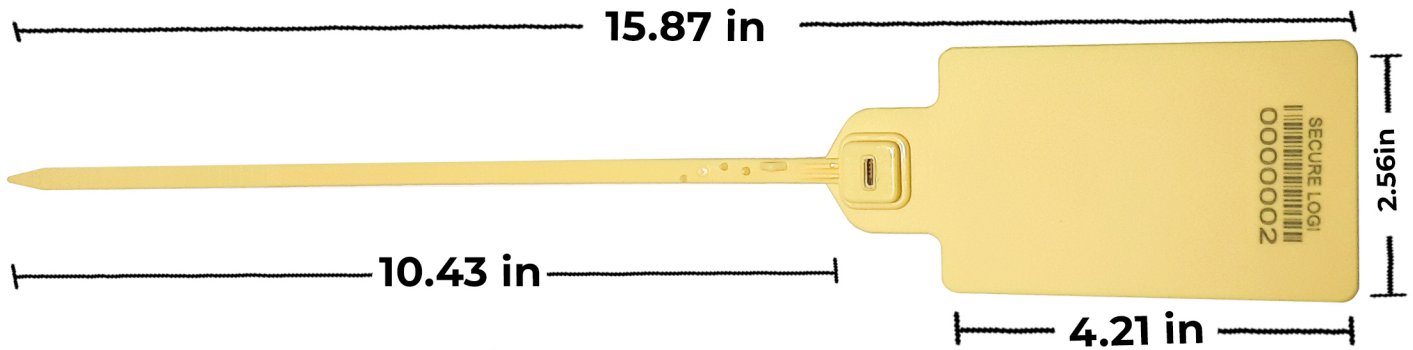


### Applications :

-  E-Commerce & Courier
-  Logistics
-  Coin & Mail Bags
-  Vending Machines
-  Plastic & Cloth Bags
-  Postal Bags

### Features & Benefits :

- Unique ultrasonic welded metal lock design, leaves marks of attempted tampering.
- Need cutter to open seal once locked
- Avoid pre and post seal tampering.
- Smooth tail with tapering end for easy pull up
- Integral metal clip provides a high level of security.
- All of our seals are made using food grade raw materials; hence they are safe to be used on food, pharmaceutical and drug applications.



## Secure Logi

Secure Logi is a high-quality polypropylene pull tight security seal with a broad flag and long tail. The broad flag provides ample space to customize the seal as per your needs. Sepio uses ultrasonic welding technology for its seals. Hence the seals cannot be cut or forced open without leaving clearly visible evidence of tampering. Our Secure Logi strap seals are primarily used in industries such as courier services, E-commerce and logistics to seal bags, parcels and truck doors.

### Marking/Printing :

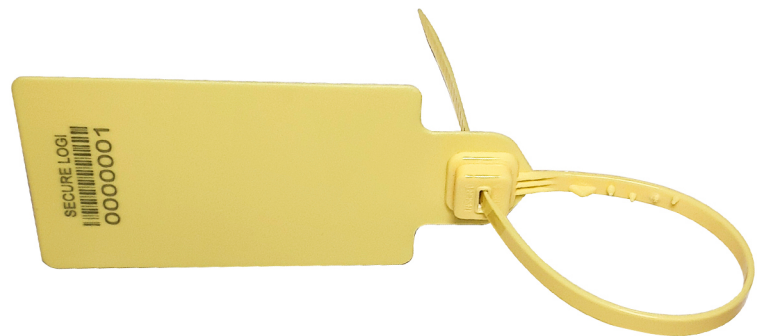
Standard marking: Company name/Logo, Barcode & consecutive numbers (7 digits) laser engraved.

### Colours :




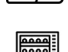


Standard: White (advised for barcode printing)  
Popular Colors Available: Orange, Green, Blue, Yellow

### Technical Data :

Housing Raw Material – PPCP CAP – PPHP  
Metal Lock – SS

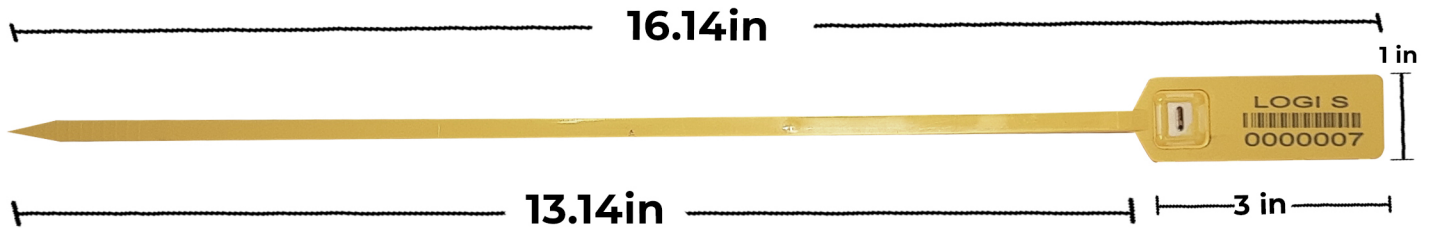


### Applications :

-  E-Commerce & Courier
-  Logistics
-  Coin & Mail Bags
-  Vending Machines
-  Plastic & Cloth Bags
-  Postal Bags

### Features & Benefits :

- Unique ultrasonic welded metal lock design, leaves marks of attempted tampering.
- Need cutter to open seal once locked
- Avoid pre and post seal tampering.
- Smooth tail with tapering end for easy pull up
- Integral metal clip provides a high level of security.
- All of our seals are made using food grade raw materials; hence they are safe to be used on food, pharmaceutical and drug applications.



## Logi S

The Logi-S a pull tight plastic security made from high quality raw material. It is a three-piece seal consist of plastic housing, cap and an integral metal clip which provides a high level of security. During application the tapering longer tail fits easily into the eyelet and allows smooth tail insertion for easy strapping.

### Marking/Printing :

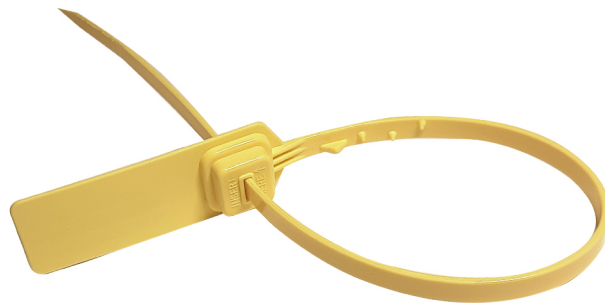
Standard marking: Company name/Logo, Barcode & consecutive numbers (7 digits) laser engraved.

### Colours :




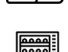


Standard: White (advised for barcode printing)  
Popular Colors Available: Orange, Green, Blue, Yellow

### Technical Data :

Housing Raw Material – PPCP CAP – PPHP  
Metal Lock – SS



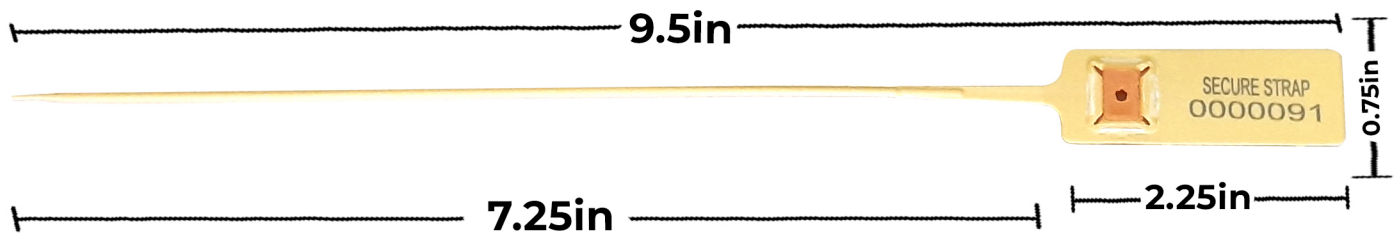
### Applications :

-  E-Commerce & Courier
-  Logistics
-  Coin & Mail Bags
-  Vending Machines
-  Plastic & Cloth Bags
-  Postal Bags

### Features & Benefits :

- Unique ultrasonic welded metal lock design, leaves marks of attempted tampering.
- Need cutter to open seal once locked
- Avoid pre and post seal tampering.
- Smooth tail with tapering end for easy pull up
- Integral metal clip provides a high level of security.
- All of our seals are made using food grade raw materials; hence they are safe to be used on food, pharmaceutical and drug applications.





## Secure Strap

The Secure Strap is an adjustable plastic strap seal designed for use on a wide variety of applications where fast, easy and secure sealing is required.

It is a three- piece seal made up of high quality polypropylene plastic with an integral metal clip which provides a high level of security. During application the tapering tail fits into small sealing apertures and allows smooth tail insertion for easy pull up.

### Marking/Printing :

Standard marking: Company name/Logo, Barcode & consecutive numbers (7 digits) laser engraved.

### Technical Data :






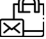





Housing Raw Material – PPCP CAP – PPHP  
Metal Lock – SS

### Colours :

Standard: White and Yellow  
Custom: Orange, Red, Blue, Green

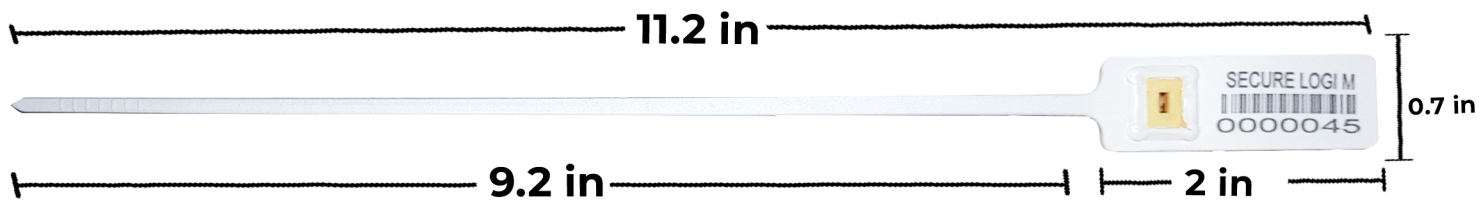


### Applications :

-  ATM Cassettes
-  Lockout/Tagout
-  Trailer
-  Mini-bars
-  Hatches
-  Plastic & Cloth bags
-  Vending Machines
-  Tankers
-  Tote boxes
-  Pouches
-  Valves

### Features & Benefits :

- Three-piece polypropylene seal
- Avoid pre and post sealing tampering.
- Need cutter to open seal once locked
- 2 mm tail fits small sealing apertures.
- Smooth tail insertion for easy pull up.
- Integral metal clip provides a high level of security.
- All of our seals are made using food grade raw materials; hence they are safe to be used on food, pharmaceutical and drug applications.



## Logi M

The LOGI-M a pull tight plastic security made from high quality raw material. It is a threepiece seal consist of plastic housing, cap and an integral metal clip which provides a high level of security. During application the tapering longer tail fits easily into the eyelet and allows smooth tail insertion for easy strapping.

### Marking/Printing :

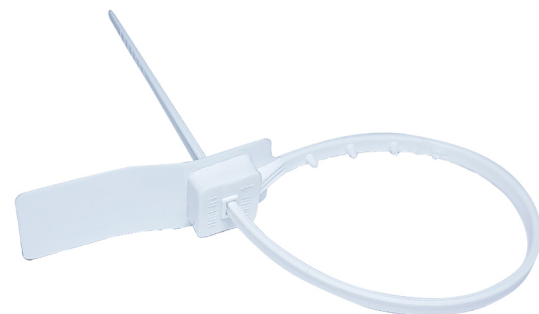
Standard marking: Company name/Logo, Barcode & consecutive numbers (7 digits) laser engraved.

### Colours :




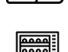


Standard: White (advised for barcode printing)  
Popular Colors Available: Orange, Green, Blue, Yellow

### Technical Data :

Housing Raw Material – PPCP CAP – PPHP  
Metal Lock – SS

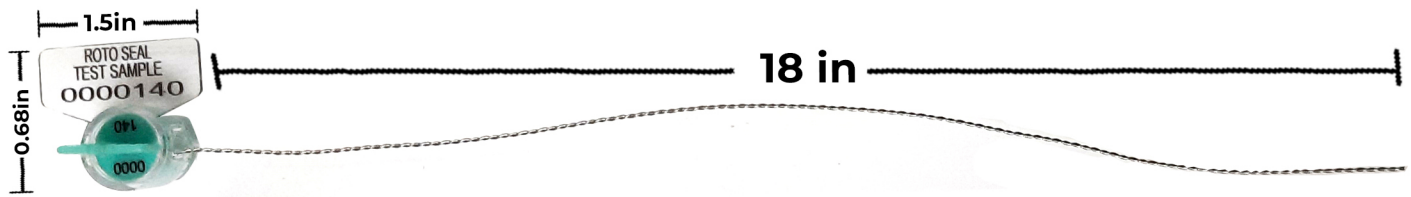


### Applications :

-  E-Commerce & Courier
-  Logistics
-  Coin & Mail Bags
-  Vending Machines
-  Plastic & Cloth Bags
-  Postal Bags

### Features & Benefits :

- Unique ultrasonic welded metal lock design, leaves marks of attempted tampering.
- Need cutter to open seal once locked
- Avoid pre and post seal tampering.
- Smooth tail with tapering end for easy pull up
- Integral metal clip provides a high level of security.
- All of our seals are made using food grade raw materials; hence they are safe to be used on food, pharmaceutical and drug applications.



## Secure Twist

Secure Twist is a patented seal made of high-grade polycarbonate and a multi-lock feature for added security. Once sealed, the locking mechanism is completely encased, meaning tampering is extremely difficult - any tamper attempts are clearly visible from viewing the locking insert through the transparent body. Secure twist Seal is a durable plastic and wire seal that can be applied without a tool.

### Marking/Printing :

Standard marking: Company name/Logo, Barcode & consecutive numbers (7 digits) laser engraved.

### Colours :

Standard: White (advised for barcode printing)  
Popular Colors Available: Orange, Green, Blue, Yellow

### Features & Benefits :





- Wire twists around insert, uni-directional seal.
- Single use seal, cannot be re-used once opened.
- No tools required.
- Attached stainless steel wire up to 18" (304mm) long.
- Spools or pre-cut lengths of wire or plastic coated galvanized wire also available.
- Proprietary encrypted patch which shares "MIS" information.
- All of our seals are made using food grade raw materials; hence they are safe to be used on food, pharmaceutical and drug applications.



### Technical Data :

Wire – Stainless steel grade 304  
Seal - Polycarbonate

### Applications :

-  Meters
-  Drums
-  Gasoline Pipes
-  Weighing scales

# Secure Bolt

Secure Bolt is constructed and manufactured of material such as metal with the intent to delay intrusion and have been designed to conform with world customs. Bolt seals are closed by hand by pushing the seal body and head together and opened with the use of bolt cutters. Interlocking anti-spin block mechanism when closed doesn't allow bolt to rotate / spin once locked.

## Colours :

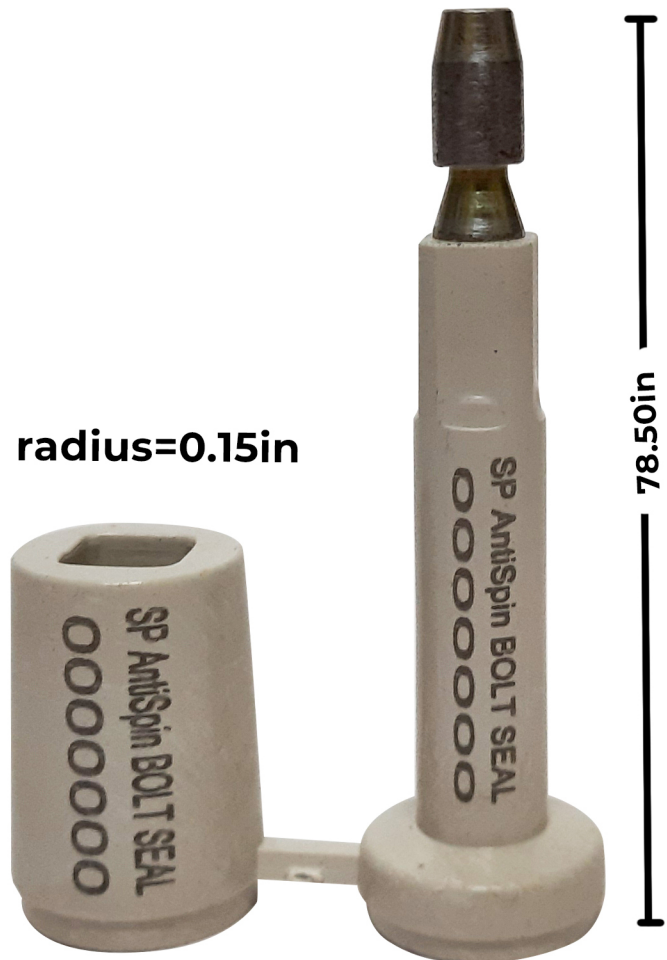
Standard: Yellow & White

## Technical Data :





Material:  
 Bolt: MS, yellow zinc pattern  
 Coating: Plastic (ABS) Spring: Steel  
 Body: MS

## Features & Benefits :

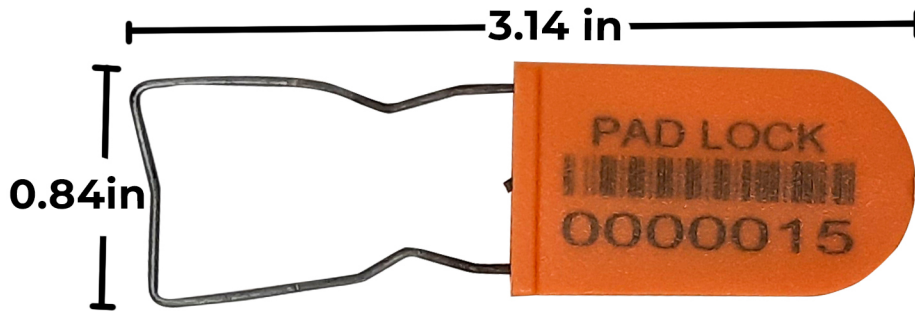
- Pull apart force 1200 kg minimum prevents opportunistic theft
- Laser numbering – impossible to change, Increases security level
- Numbers on bolt and body prevents substitution of components parts
- Customer name/logo for clear identification
- All of our seals are made using food grade raw materials; hence they are safe to be used on food, pharmaceutical and drug applications.



## Applications :

-  Trucks/Tankers/Vans
-  Customs
-  Railway Wagons
-  Containers





## Secure Padlock

Secure Padlock is press-fit type, one-time use seal which is tamper-evident. It is a two-piece seal consisting of a plastic housing and wire hasp made of high-grade steel. During application, the wire hasp is pressed easily inside the plastic housing for locking. The wire can be scored or unscored as per requirement. The padlock seal can be branded, numbered and / or barcoded for extra security.

### Marking/Printing :

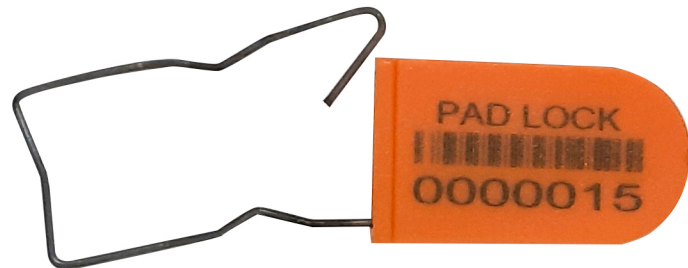
Standard: Laser marked, consecutive numbers (7 digits)  
Special: Laser etched barcode  
Barcode 128 interleaved 2/5

### Technical Data :





Housing: HIP  
Locking insert: spring steel

### Colours :

Standard – Orange  
Others- Yellow, Purple, White



### Applications :

-  Food and bar trolleys
-  Drums
-  Garment samples
-  Totes/crates

### Features & Benefits :

- Marking and barcode / serial number provided to prevent illegal manipulation, substitution and replication
- Dismantle is impossible once locked
- Choice of having either the wire scored (removal by hand) or unscored (removal by cutter)
- All of our seals are made using food grade raw materials; hence they are safe to be used on food, pharmaceutical and drug applications.